



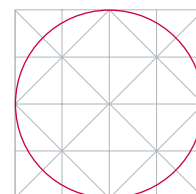
**ELECTRIC DRIVES**  
FOR EVERY DEMAND



# Roller table motors

Geared roller table motors

[www.vem-group.com](http://www.vem-group.com)





# Geared roller table motors

## Drives for rolling mills

### **Optimum control – stable synchronous operation**

The drive elements of the mill and driving tables in rolling mills are required to meet especially exacting electrical and mechanical demands. To cater for these extreme operating conditions, VEM has complemented its direct drives with a range of geared roller table motors. Geared roller table motors from VEM

- › are the optimum drive solution for very low speeds
- › guarantee ideal control response and synchronous operation in converter-fed configurations
- › cope with all operating modes, such as continuous, intermittent and short-time duty, as well as start-up, braking and reversing functions
- › withstand the high ambient temperatures of the molten steel
- › handle the overloads arising should jammed stock block the transport system
- › have been demonstrating their function capabilities and reliability for many decades.

### **Internationally proven quality**

The single-stage and multi-stage gears of VEM are developed in cooperation with leading gearing manufacturers and are designed for operation in continuous casting, furnace and rolling mill plants.

The individual components of the gears meet the requirements of the ambient conditions in these applications. The gear housing is available in grey cast iron (GG) or in spheroidal cast iron (GGG) or in steel-welded design. The wall thickness is amply sized so that bearings and seals have enough space depending on the place of installation. The gear wheels are also designed according to the requirements. The gear teeth are made as corrected involute helical gear teeth. The gear wheels are case-hardened and honed. The quality corresponds with the quality class 7 from DIN. The used materials are 16MnCr5, 20MnCr5 or 17CrNiMo6.

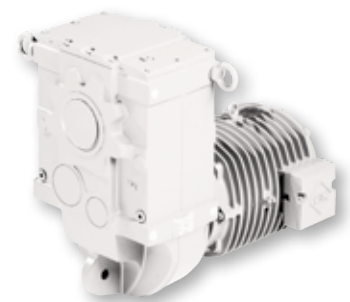
The gear box main shaft is sealed to the outside with a VITON sealing ring running on a hardened and honed bushing and additionally sealed with a gap ring. With this construction detail the intrusion of dust, scale or water is inhibited.



Roll table motors meet the extreme operating demands encountered in rolling mills.

<b>Series</b>	<b>A21G</b> <b>ARG</b>
Sizes	112 to 400
Type of protection	IP 55 acc. to IEC/EN 60034-5
Type of construction	IM B3, IM B35 and derived types of construction acc. to IEC/EN 60034-7
Type of cooling	IC 410, IC 411 acc. to IEC/EN 60034-6

Please refer to our catalogues for technical details. The catalogues are available in printed or in digital version on DVD. They are also available in the internet.



### **VEM Holding GmbH**

Pirnaer Landstraße 176  
D-01257 Dresden

Phone: +49 351 208-0  
Fax: +49 351 208-1028

### **VEM Sales**

#### **Low voltage**

Phone: +49 3943 68-0  
E-Mail: [motors@vem-group.com](mailto:motors@vem-group.com)

#### **High voltage**

Phone: +49 351 208-0  
E-Mail: [sachsenwerk@vem-group.com](mailto:sachsenwerk@vem-group.com)

#### **Drive systems**

Phone: +49 30 9861-2104  
E-Mail: [transresch@vem-group.com](mailto:transresch@vem-group.com)



For detailed information  
please visit our website.